

# THE SYLVESTER FEED CO.

1906

## Spring Catalogue

—OF—

Seeds, Poultry Supplies,

Fertilizers, Flour AND Feed,

Stock Food and General

Hints to Feeders \* \* \*

**87-89 Yates St.**

**Victoria, B. C.**

---

VANCOUVER ISLAND AGENTS FOR  
CALGARY MILLING COMPANY, Limited, CALGARY, ALTA.



## OUR FIRST ANNOUNCEMENT



**T**HIS Book is an advertisement. It tells you about the SYLVESTER FEED CO. and the Feeds, Etc., which they manufacture and sell. But it is more than that.

It is a convenient guide for every farmer, poultry raiser, dairyman and every person who owns live stock of every kind.

It is filled with practical money-making suggestions—helps in your every day work, not mere theories, but facts, drawn from the actual experience of farmers, stockmen and poultry raisers who have made money from live stock.

We have weighed carefully everything we have said, we have said nothing that is not proved by facts, we are interested in the live stock industry and its success for our business depends upon it. The more money we can help you to make the more money we will make in the end, and you increase your profits by more careful, systematic feeding by getting just a little more good out of every pound of feed you feed and a little more out of every animal and bird on your place.

This our first Catalogue is designed to show you how to get the extra profit—and which we respectfully submit for your approval.

Soliciting your patronage.

**SYLVESTER FEED CO.**

**Victoria, B. C.**

# The Sylvester Feed Co.

## SEED MERCHANTS

VICTORIA, / / B. C.

Showing You How Much Seed to the Acre and Weight of Same Per Bushel

|  | WEIGHT TO<br>SEED AN ACRE | WEIGHT OF<br>BUSHEL |
|--|---------------------------|---------------------|
| Red Clover .....                         | 8- 14 Lbs.                | 60 Lbs.             |
| Alsyke " .....                           | 8- 10 "                   | 60 "                |
| White " .....                            | 6- 8 "                    | 60 "                |
| Alfalfa or Lucerne .....                 | 10- 15 "                  | 60 "                |
| Crimson, Scarlet or Italian Clover ..... | 10- 15 "                  | 60 "                |
| Timothy .....                            | 12- 20 "                  | 45 "                |
| Common Millet .....                      | 40- 50 "                  | 50 "                |
| German " .....                           | 40- 50 "                  | 50 "                |
| Siberian " .....                         | 20- 25 "                  | 50 "                |
| Hungarian " .....                        | 40- 50 "                  | 48 "                |
| Flax Seed .....                          | 56- 70 "                  | 56 "                |
| Blue Grass .....                         | 30- 40 "                  | 14 "                |
| Red Top, Fancy, solid seed .....         | 10- 12 "                  |                     |
| "    Chaff .....                         | 30- 40 "                  | 14 "                |
| Orchard Grass .....                      | 30- 38 "                  | 14 "                |
| Perennial Rye Grass .....                | 30- 40 "                  | 24 "                |
| Italian " .....                          | 30- 40 "                  | 24 "                |
| English Blue Grass, Meadow Fescue .....  | 30- 40 "                  | 24 "                |
| Pasture Mixture .....                    | 40- 42 "                  |                     |
| Lawn Grass .....                         | 40- 70 "                  |                     |
| Dwarf Essex Rape—in drills .....         | 2- 3 "                    | 55 "                |
| "    "—broadcast .....                   | 4- "                      |                     |
| Brome Grass, Bromus Inermis .....        | 42- "                     | 14 "                |
| Canada Field Peas—broadcast .....        | 150-180 "                 | 60 "                |
| "    "—with oats .....                   | 90-100 "                  |                     |
| Cow Peas—broadcast .....                 | 60- "                     | 60 "                |
| "    "—in drills .....                   | 30- "                     |                     |
| Beans—in hills .....                     | 20- 35 "                  | 60 "                |
| Cane—broadcast .....                     | 50- 75 "                  | 50 "                |
| Broom Corn .....                         | 8- 12 "                   | 46 "                |
| Buckwheat .....                          | 30- 60 "                  | 52 "                |
| Corn—in hills .....                      | 14- 18 "                  | 56 "                |
| "    "—in drills for fodder .....        | 75- "                     |                     |
| "    "—broadcast .....                   | 150- "                    |                     |
| Sweet Corn—in drills for fodder .....    | 75 "                      | 46 "                |
| "    "—broadcast .....                   | 150 "                     |                     |
| Wheat .....                              | 90-120 "                  | 60 "                |
| Rye .....                                | 85-100 "                  | 56 "                |
| Oats .....                               | 100 "                     | 32 "                |
| Barley .....                             | 95-120 "                  | 48 "                |

# FOR POULTRY RAISERS

---

---

## SYLVESTER'S CHICK STARTER

---

---

**T**S a primary food for baby Chicks up to six weeks old. This food is carefully selected—re-cleaned stock of cracked grain, Kaffir corn, millet, hemp, rape, grit, etc., free from dust and dirt and strictly high grade. It is a mixture of fifteen different seeds—grain and grit so proportioned that they meet the needs of the growing Chick and nourishes them. The average Chick food contains too much fat making and not enough for bone and muscle, and consequently the Chicks get diarrhoea, indigestion and generally crop bound, which soon ends its existence.

**SYLVESTER'S CHICK STARTER** is a proper balanced ration which is to be fed dry in limited quantities four or five times a day and you will have no trouble or loss by disease. It is all there because we manufacture in our mill nothing but poultry foods—no breakfast foods or cereals to consume the better part of the grain and leave the refuse for the tender little Chicks that have not the strength to digest such coarse, fibrous products. All grain is weighed with special care and proportionally mixed, therefore guaranteeing the best Chick food on the market to-day. You save enough young Chicks to more than pay for the feed.

|          |         |   |        |
|----------|---------|---|--------|
| Prices : | 10 Lbs. | - | 50c.   |
|          | 50 "    | - | \$2.00 |
|          | 100 "   | - | \$3.50 |

---

---

NOT HOW CHEAP—BUT HOW GOOD

## EVERYTHING FOR THE FOWL FAMILY

---

---

# SYLVESTER'S —EXCELSIOR— HENFOOD or SCRATCH FOOD

---

---



**T**S an all grain poultry feed for up-to-date feeders ; is a mixture of grains of the most extensive variety, thoroughly blended and cleaned, which cannot fail to give beneficial results, containing sufficient bone and shell so as to keep the bone and muscle properly developed. We aim in putting this mixture before you to save you the necessity of buying several bags of feed and mixing yourself, you cannot get the right proportions and therefore you feed too much of one and not enough of another; this is so proportioned that all trouble is overcome. Our machines for the cleaning and our special grain mixture are of the latest type. We import direct and ensure the best for the money.

|                                   |       |
|-----------------------------------|-------|
| Price in 100 Lb. Sacks, @ \$ 1.75 |       |
| “ 1,000 Lbs., - -                 | 17.00 |
| “ 2,000 “ - -                     | 33.00 |

---

---

YOU OWE IT TO YOURSELVES TO TRY THE  
FIRST BAG AND COMPARE RESULTS. WE KNOW  
WHAT THE RESULTS WILL BE, AN INCREASE IN  
THE EGG BASKET. x x x x x x x

# A REVOLUTION IN THE EGG MARKET

That is what our customers say  
after feeding

## Sylvester's Excelsior Meal

**T**S a mixture of grains of the most extensive variety, including Bone and Grit, thoroughly ground and blended, which cannot fail to give beneficial results. After eleven years experience in the care of Poultry, we have now the best morning food for Poultry that can be made. It makes Hens lay, keeps them strong and healthy and makes feathers grow. It costs a little more than the ordinary middlings used for the morning, but is a richer and more nutritious food, and is the cheapest in the end.

**DO NOT NEGLECT TO FEED  
SYLVESTER'S EXCELSIOR  
MEAL IN THE MORNING**

|                             |                   |
|-----------------------------|-------------------|
| Put up in 80 lb. bags ..... | @ \$1.50 per sack |
| 1,000 lbs. cost .....       | \$17.00           |
| 2,000 " .....               | 33.00             |

---

---

**Telephone 413 To-morrow and see the  
change in your Poultry**

## PROFIT IN HEALTHY POULTRY

# Sylvester's Egg Producer

**It Makes Poultry Pay—It Makes Hens Lay—It Makes Chicks Grow  
It Promotes Thrift and Vigor—It Adds to Your Profits**

**S**YLVESTER'S EGG PRODUCER in the past few years has gained the reputation in the poultry-yards of many of the leading poultry raisers in the country, of being the best egg-producer and growth-promoter ever put upon the market. Ten thousand poultry raisers are now using it with surprising results.

Added to the regular feeding ration it will do your fowls more good, keep them in better health and vigor, make hens lay more eggs, make chicks grow faster and yield a greater profit than you can secure in any other way.



BEFORE

Sylvester's Egg Producer is different from other poultry foods in that it is not a stimulant, but a genuine, healthful food tonic. It produces eggs, promotes growth, induces vigor and vitality, not by *forcing*, but inducing a healthy, natural condition, by keeping the digestive system in perfect order and by supplying the tonic elements which fowls secured for themselves when in a natural, wild state. Its cost is slight—its returns large. It helps the fowl get more good out of the grain you feed. It saves your grain bills and increases your profits. Don't let your hens worry along, insufficiently nourished. Don't let them get fat and lazy and good-for-nothing. Avoid both extremes by feeding regularly Sylvester's Egg Producer, the great vitalizer, and reap a big reward in profits. It will do for you what it has done for others.



AFTER

Believe in Sylvester's Egg Producer  
Brings a good yield of Eggs

**Price: Per Package, 50c.; Per Pail, \$1.50**

# IT MAKES STOCK THRIVE

WHAT?

## Sylvester's Stock Food

**Helps the Farmer to make money, because it makes the Feed he uses go further and improves his stock**

---

---

**FOR DAIRYMEN.** Sylvester's Stock Food you should never be without, as it causes rapid growth in your animals, assists in preparing them for market, gives show animals that silky coat, increases the flow of milk and gives it quality. In Cows it prevents stomach trouble, such as bloating, impaction, etc., also milk and parturient fevers. The constant use saves feed, and it will doubly pay for itself.

**FOR HORSE OWNERS.** Sylvester's Stock Food tones the system and promotes digestion, regulates the bowels, blood, liver and digestive organs, and consequently builds up run down animals, restores lost appetite, prevents and cures cough, heaves, distemper, colds, colic, hide-bound, eruption of the skin, kidney trouble, lung fever and exhaustion. Expels worms and bots and is a preventative against contagious diseases. Produces muscle and better staying power. Improves the wind and its action on the blood help wounds to heal.

**Price: Per Package, 50 cents**  
**Per Pail, - \$2.00**

**BUY IT AND TRY IT. ONCE USED ALWAYS USED**



# DOUBLE YOUR MILK SUPPLY

WITH WHAT?

## CREAMERY CHOP FEED



**W**E beg to call your attention to this particular kind of Feed, manufactured only by ourselves and having nothing but the best of grains in its manufacture. Each sack contains enough oil cake in sufficient quantity so that no other milk producer need be added, except SYLVESTER'S STOCK FOOD. This Creamery Chop Feed has been on the market for three years and our sales increasing, establishing the fact that if the quality was not in the feed it would die a natural death.

Do not run away with the idea that anything is good enough for your Cow, as you cannot expect something for nothing, and by using cheap inferior foods you are losing money. We want you to make money, as your gain is our increased sales.

**WRITE FOR PRICES AND  
ASK FOR SAMPLE**

## GROUND BONE FOR POULTRY

Manufactured by us consists of ground beef bones, thoroughly dried and free from grease. It is more economical and better in every way than raw beef bone. Rich in bone phosphate of lime, which is so necessary for making good egg shells and for building up the frame of the chickens. Should be placed in liberal quantities in a clean, dry place, easily accessible to the chickens at all times.

|                     |   |   |   |         |
|---------------------|---|---|---|---------|
| Price per ton,      | - | - | - | \$35.00 |
| Price per 100 lbs., | - | - | - | 2.00    |

When your hens are not laying, and you are getting discouraged with them, don't worry, BUY BONE.

---

---

## GROUND SHELLS FOR POULTRY

Our shells are crushed and ground to a size which expert poultry men agree to be the best. If you have purchased other brands, you will have noticed that there are from 10 to 25 lbs. of waste, consisting of dirt and dust mixed in with every 100 lbs. of shell. (*This means a loss to you*). Every pound of shell we sell is all shell and no waste. It is needless for us to enlarge upon the value of crushed shells for Poultry. Every poultry man realizes their importance as an egg shell maker and general promoter of good health.

|                         |   |   |   |        |
|-------------------------|---|---|---|--------|
| Price per 100 lb. sack, | - | - | - | \$1.25 |
|-------------------------|---|---|---|--------|

# DIGESTION OF THE HORSE

—BY USING—

## ROLLED OATS



This is a practical and very important matter to every stockman, or any one owning horses or other live stock. If the animal is run down and the digestion becomes weak, then from one-third to one-fifth of the grain eaten is not assimilated and passes through the animal undigested, and worse than wasted. It is not what an animal eats, but what is thoroughly digested that results in vigorous life and increased flesh. Many animals with ravenous appetites never gain flesh, or at best very slowly. What is the matter? They eat twice as much as other animals that are gaining rapidly. It is simply a question of impaired digestion and assimilation. Not one animal in ten has proper digestion, and it is a well established fact to intelligent stockmen that fully one-fourth to one-fifth of the grain usually fed to stock is passed through the system without any benefit to the animal and at a great loss to the feeder. **SYLVESTER STOCK FOOD** was originated by a practical veterinarian, who raised stock for years, and it is a perfectly safe food for horses in any condition. It is rich in nutrition and has a superior vegetable medication of seeds, roots and herbs. We have combined superior merits with unequalled cheapness.

**We have the largest and fastest machine for rolling Oats in British Columbia, and if you have Oats bring them to us, we can roll them for you**

## LICE STEALS YOUR PROFIT

### Sylvester's Vermin Killer

The most of your chicken troubles come from lice.  
The most chicken failures are caused by lice.  
You can't afford to keep a lousy hen, nor to have a lousy chicken house.  
There's no need of it.

#### SYLVESTER'S VERMIN KILLER

Kills vermin of all sorts on poultry, animals, plants and dogs.  
It is one of the best insecticides known.  
Sure in its results but absolutely harmless.  
Full strength and absolute purity guaranteed.  
Does not lose its strength. If kept dry it is good for years.  
May be used with safety and sure results for setting hens and little chicks.  
Invaluable for calves, colts and pigs.  
It is a powerful disinfectant and deodorizer, and should be sprinkled freely about chicken houses, stables, pens, cellars, etc., wherever a disinfectant is desired.  
Excellent for house plants.  
**Sylvester's Vermin Killer** comes in 25c. tins, with sprinkler top.  
It is inexpensive, but it does the work.  
If your dealer cannot supply you, write to us.

## KILLUME

### SYLVESTER'S LIQUID LICE KILLER

#### DIRECTIONS FOR USING

Thoroughly apply to inside of hen house, including roosts and nests, with spray, or if brush is used, mix with thin white-wash.

#### USE FOR DISINFECTANT

Take one part of Killume and twenty of water mixed together makes an excellent antiseptic solution for general purposes.

**Price 50 cents per Tin**

# BONE FERTILIZER

---

---

**A**LL things considered, pure raw bone meal is the best and cheapest manure. It is estimated that every one hundred pounds of this fertilizer contains enough phosphoric acid for forty-six and a half bushels of wheat. It will take several crops to assimilate the entire amount. Either drill in with the wheat about two hundred pounds to the acre, or sow it broadcast and harrow it in lightly previous to drilling in the wheat.

In fertilization nothing takes precedence in importance over animal bones, because they furnish the soil with the essential requisite of nitrogen as well as phosphoric acid. They consist, in the main, of gelatine and phosphate of lime. Those of young animals, and the soft, porous parts of all bones, contain more gelatine than the solid parts or the bones from older animals. On the average, one thousand pounds of good bone dust contains about thirty-eight pounds of nitrogen and nearly 25 per cent. of phosphoric acid, or, to put it more familiarly, one ton of good bone dust contains as much nitrogen as eight and one-half tons of fresh stable manure, and as much phosphoric acid as one hundred and ten tons of such manure.

In using ground bone for seeding down, equal proportions of fine, medium and coarse bone meal are recommended. The idea is that various grades will become available as plant food one after the other, so that all the bone is utilized, and yet it lasts the greatest length of time. There is something in this.

If you have plants growing in pots and cannot repot them, or do not care to do so, and have reason to think the nutriment of the soil has been pretty thoroughly exhausted, dig some bone meal into the earth by their roots, you will be surprised at its effect on them. They will begin to grow vigorously in a short time, and the flowers will be large and profuse. It is convenient to use, not offensive in odor, and costs but little. **PRICE : Per Ton, \$35 ; 100 lbs., \$2.**

# SYLVESTER'S ROUP CURE

---

---

**CAN ROUP BE CURED?**

**MOST DECIDEDLY IT CAN**

Your fowls are sick—moping, sneezing, rattling in the throat, eyes swollen, breathing with difficulty—you are losing them by dozens. **That is Roup**, and it is as infectious as diphtheria. Use Sylvester's Roup Cure. Placed in the water it kills the germ and cures with no effort on your part.

**Price 25c. Per Package Postpaid**

---

---

WRITE FOR CATALOGUE

---

---

## **SEED OATS**

---

---

We offer this season two varieties, viz. : Ligowa (Swedish Oats) and Tartar King, both highly recommended as being big croppers. Place your orders early.

**\$30.00 PER TON**

---

---

**SYLVESTER FEED CO.**

**87-88 Yates St., Victoria, B. C.**

# WE GRIND GRAIN

and also roll grain, our machines being of the most modern styles and of great capacity, being two tons per hour. It will pay you to bring us your grain. We have at the head of our mill a competent miller, and should you wish any blending of grain for any special purpose his experience will be gladly given. . .

**GRIND YOUR GRAIN and REDUCE YOUR FEED BILL**

---

---

## GRAIN SACKS

We carry in stock several thousand old and new sacks for either oats, wheat or roots, and will be pleased to quote prices on same at any time. . . . .

---

---

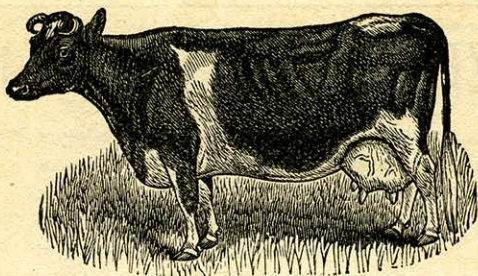
## FANNED OATS FOR HORSES

We make a specialty of carrying in stock this line of goods, and to horsemen who are driving fast horses it will be to their advantage to use fanned oats. . . . .

---

---

**TRY SYLVESTER'S STOCK FOOD**



# THE DAIRY COW

**is the most economical producer of food for mankind**

---

Neither the steer nor the hog will yield so large an amount of life-sustaining food at so low a cost

She is a hard-worked animal and needs and deserves all the help that a master can give her. Next to good care and feeding nothing will do the dairy cow so much good, and so increase her productiveness as

## **Creamery Chop Feed and Sylvester's Stock Food**

The most economical feeding, the most profitable feeding, is impossible without it.

It is self-evident—

It makes stock thrive—

It increases the flow of milk and is a preventative of milk fever.



# POULTRY SUPPLIES

Below will be found a complete list of the different lines we handle and prices :

|  |                      |
|--|----------------------|
| <b>Beef Scraps (Armour's) per 100 lbs.</b> | <b>\$4 50</b>        |
| <b>Beef Scraps (Chicago)</b>               | <b>4 00</b>          |
| <b>Ground Bone, poultry size,</b>          | <b>2 00</b>          |
| <b>Ground Shell,</b>                       | <b>1 25</b>          |
| <b>Flax Seed,</b>                          | <b>4 50</b>          |
| <b>Linseed Meal</b>                        | <b>4 50</b>          |
| <b>Sunflower Seed,</b>                     | <b>9 00</b>          |
| <b>Canary Seed,</b>                        | <b>9 00</b>          |
| <b>Hemp Seed,</b>                          | <b>8 00</b>          |
| <b>Millet Seed,</b>                        | <b>7 50</b>          |
| <b>Rape (Canary)</b>                       | <b>7 00</b>          |
| <b>Kaffir Corn,</b>                        | <b>5 00</b>          |
| <b>Leg Bands for Poultry (Climax)</b>      | <b>25c. per doz.</b> |
| <b>Sylvester's Vermin Killer</b>           | <b>25c. per tin</b>  |
| <b>Sylvester's Liquid Lice Killer</b>      | <b>50c. per tin</b>  |
| <b>Sylvester's Egg Producer</b>            | <b>50c. per pkg.</b> |
| <b>Sylvester's Roup Cure</b>               | <b>25c. per pkg.</b> |
| <b>Tin Sprayers</b>                        | <b>75c. each</b>     |
| <b>Bond Crit Crusher</b>                   | <b>\$4 00</b>        |

We import direct and sell direct to the consumer, therefore saving you the middleman's profit.

PLEASE CUT THIS ORDER BLANK OUT AND MAIL TO US

..... 190 .....

**SYLVESTER FEED CO., Seed Merchants, Victoria, B. C.**

Please ship by .....

| QUANTITY | KIND OF SEED | QUALITY | REMARKS |
|----------|--------------|---------|---------|
|          |              |         |         |

Kindly do not write anything but orders on this blank. Use separate paper for inquiries, remittances, etc.

Name .....

P. O. Address .....

**W**E wish our catalogue to be in the hands of every poultry raiser, farmer and breeder in the country, and cheerfully send it free of charge to anyone sending name and address on a postal for it. In case you have any friends that you know it would interest, send along their names and addresses to us, plainly written, and we shall send them ALL a copy.

A good many copies are lost in the mails, and we would greatly appreciate a postal in receipt, acknowledging receipt of the catalogue. This will insure your name being kept on our files, from which you will receive from time to time the new editions and other printed matter.

**We will greatly appreciate your service in sending us the name of a RELIABLE dealer in your town**

---

---

### HOW TO BUY A HORSE

**N**EVER buy a horse while in motion; watch him stand still. If sound he will stand firmly and squarely on his limbs without moving, except when he has very high life. He will be flat on the ground, with legs plump and naturally poised. If one foot is thrown forward and toe pointed to the ground with heel raised, or if foot is lifted, disease of the navicular bone may be suspected, or at least a tenderness which is liable to develop into serious disease. If the foot is thrown out, toe raised and heel brought down, the horse has suffered from laminitis, founder, or the back sinews are sprained, he will prove worthless. If feet are drawn together beneath the horse, it means a misplacement of limb and weak disposition of the muscles. If horse stands with feet spread apart or straddles with his hind legs, there is weakness of the loins and the kidneys are disordered. If knees are bent and tremble, the horse has been ruined by heavy pulling. You run great risk in buying horses with contracted or bad formed hoofs. It is always safest to have the horse thoroughly examined by a competent veterinary surgeon before closing the deal.

# SEED PRICE LIST, 1906

**A**LL Seeds are selected with the greatest care, but we give no warranty either expressed or implied. We do not guarantee any of them, nor will we be responsible for the crop. If not accepted on these conditions goods must be returned at once.

We quote to-day New Crop **GRASS AND CLOVER SEEDS**, in quantities of 10 lbs. and over. Prices subject to market fluctuations.

|                                       |              |
|---------------------------------------|--------------|
| Timothy (Choice) .....                | 7 Cts.       |
| Clover, Red.....                      | 18 "         |
| "    Mammoth.....                     | 18 "         |
| "    White.....                       | 25 "         |
| "    Crimson .....                    | 15 "         |
| "    Alyske.....                      | 18 "         |
| "    Alfalfa.....                     | 20 "         |
| Rye, Perennial.....                   | 9 "          |
| "    Italian.....                     | 9 "          |
| Orchard Grass.....                    | 16 "         |
| Red Top.....                          | 11 "         |
| Kentucky Blue Grass .....             | 14 "         |
| Rape Seed .....                       | 10 "         |
| Vetches.....                          | 5 "          |
| Lawn Grass (Sylvester's Special)..... | 25 "         |
| Oats, Ligowa .....                    | \$30 per ton |
| "    Tartar King .....                | 30 "         |
| Wheat, Spring.....                    | 40 "         |
| Barley.....                           | 30 "         |
| Peas, Golden Vine .....               | 45 "         |

Potatoes—Early Rose, Burbank Seedlings, Rural of New York, American Wonder, Flower Balls and Late Rose at market quotations.

## SYLVESTER FEED CO.

87-89 Yates Street, Victoria, B. C.